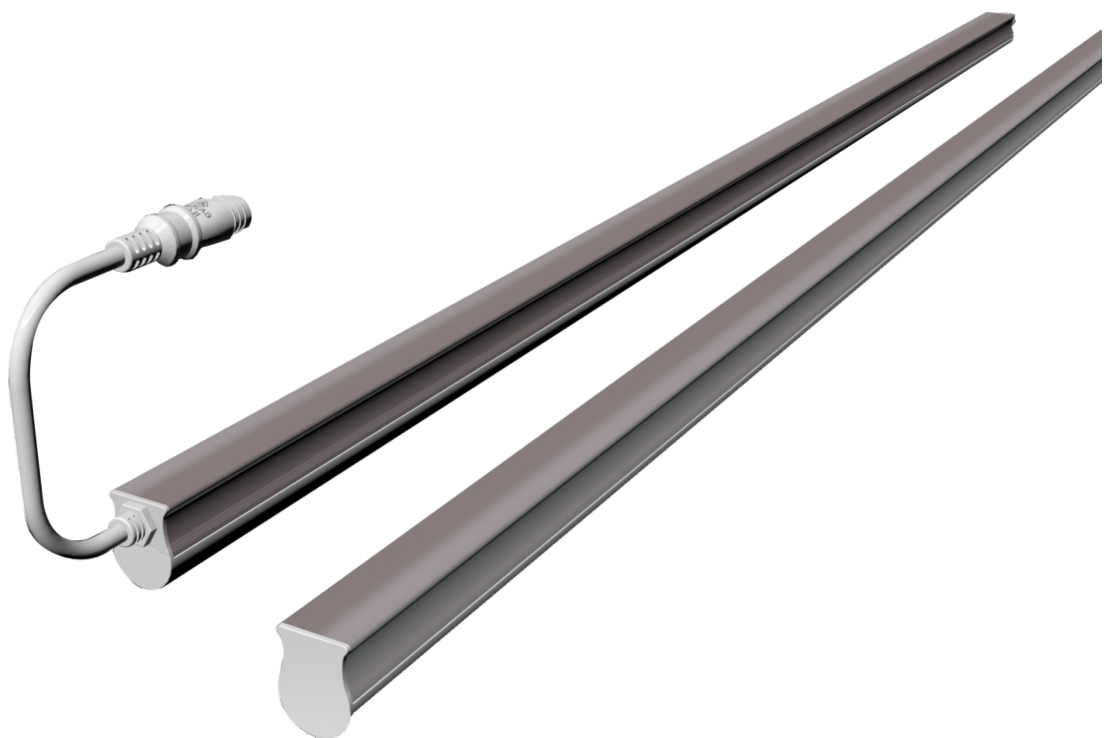
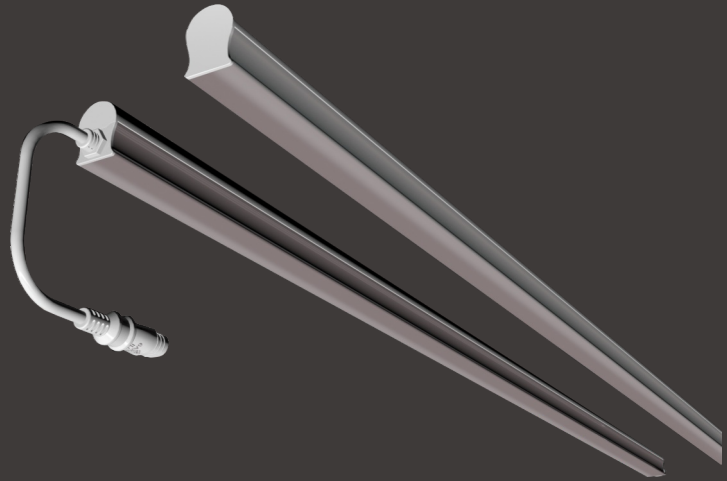


# LL121 Slim LED Linear Light



**CE RoHS**





Slim LED linear light is designed for use in a wide range of lighting applications, especially areas which benefit from which ultra slim profile. sample applications include, but not limited to: cover and cornice lighting, shelf lighting, under counters, stair hand rails, display cases, task lighting.



General  
(130°)



Narrow Beam,  
Advertising Lighting,  
Wallwasher  
(20°/30°/45°/60°/90°)

### Features

- ultra slim design
- latest high efficiency LED technology 130lm/w
- interconnection, easy installation
- frosted PC cover
- 5 years warranty
- lifespan>50000hrs

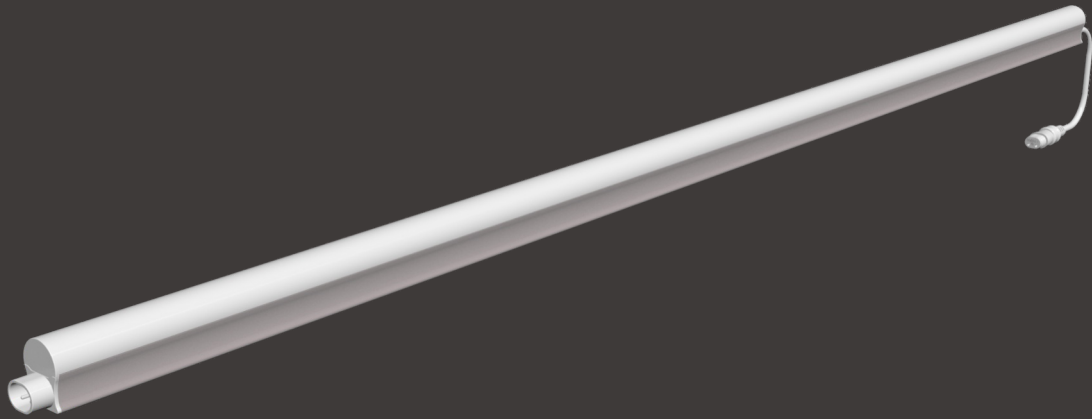
### LED CHARACTERISTICS

Input Voltage  
100-277VAC

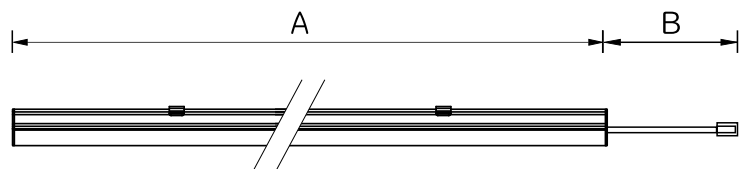
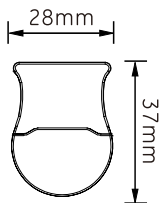
THD	PF	CCT(K)	Warranty
<15%	>0.9	4000/5000/6500	5 years

### Parameter

Type No.	LENGTH(mm)	WATTAGE (WATTS)	LUMEN (LM)	LED	Beam Angle	Cover
121-0002	900	18	2340	Epistar2835	120°/130°	clear/frosted
121-0003	1200	24	3120	Epistar2835	120°/130°	clear/frosted
121-0004	1500	30	3900	Epistar2835	120°/130°	clear/frosted
121-0006	900	18	2160	Samsung3030	20°/30°/45°/60°/90°	clear/frosted
121-0007	1200	24	2880	Samsung3030	20°/30°/45°/60°/90°	clear
121-0008	1500	30	3600	Samsung3030	20°/30°/45°/60°/90°	clear
121-0009	1200	25	2750	Epistar2835	120°	clear

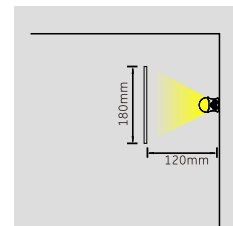
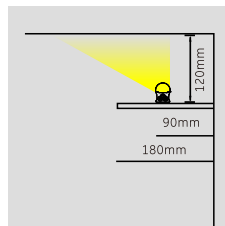
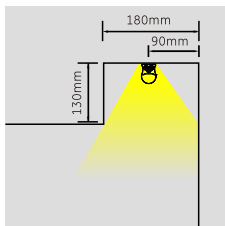
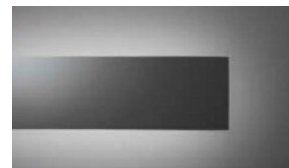
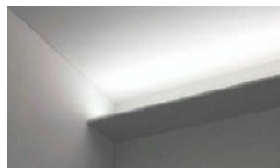
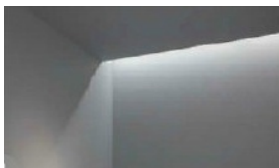


### Dimension



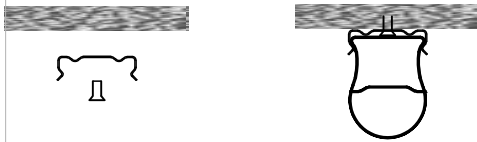
A	B
1500mm	160mm
1200mm	160mm

### Application example



## Installation

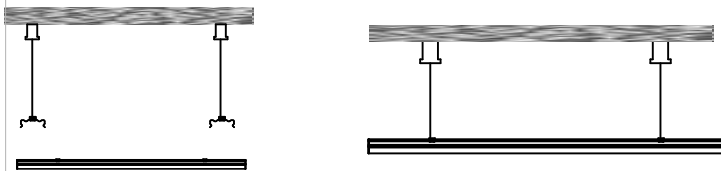
- Flush mounting



- Corner installation



- Suspending



## Maximum interconnection QTY

Line Diameter	0.5mm <sup>2</sup>	0.5mm <sup>2</sup>	0.5mm <sup>2</sup>
Power/ Voltage	110V	230V	277V
12W	27 pcs	57 pcs	69 pcs
18W	18 pcs	38 pcs	46 pcs
24W	13 pcs	28 pcs	34 pcs
30W	11 pcs	23 pcs	27 pcs

## About us

**11** YEARS LED Experience

Zhengzhou Inledco Lighting Co., LTD , located in Zhengzhou city, Henan Province, China, is a leading LED lights manufacturer with professional R&D teams. We started researching and designing LED lights from 2006 and have been exporting 100% of our products to North America and Europe ever since.

We are committed to innovation and development of LED lights. Several series of innovative products have been developed and patented, some of which are even leading the trend in the market .

**Zhengzhou inledco Lighting Co., LTD**  
**Add: High Technology Development Zone, Zhengzhou Henan China**  
**Tel: +86-371-86549719**  
**Postcode: 450000**  
**E- mail: info@ledinpro.com**  
**Website: www.ledinpro.com**