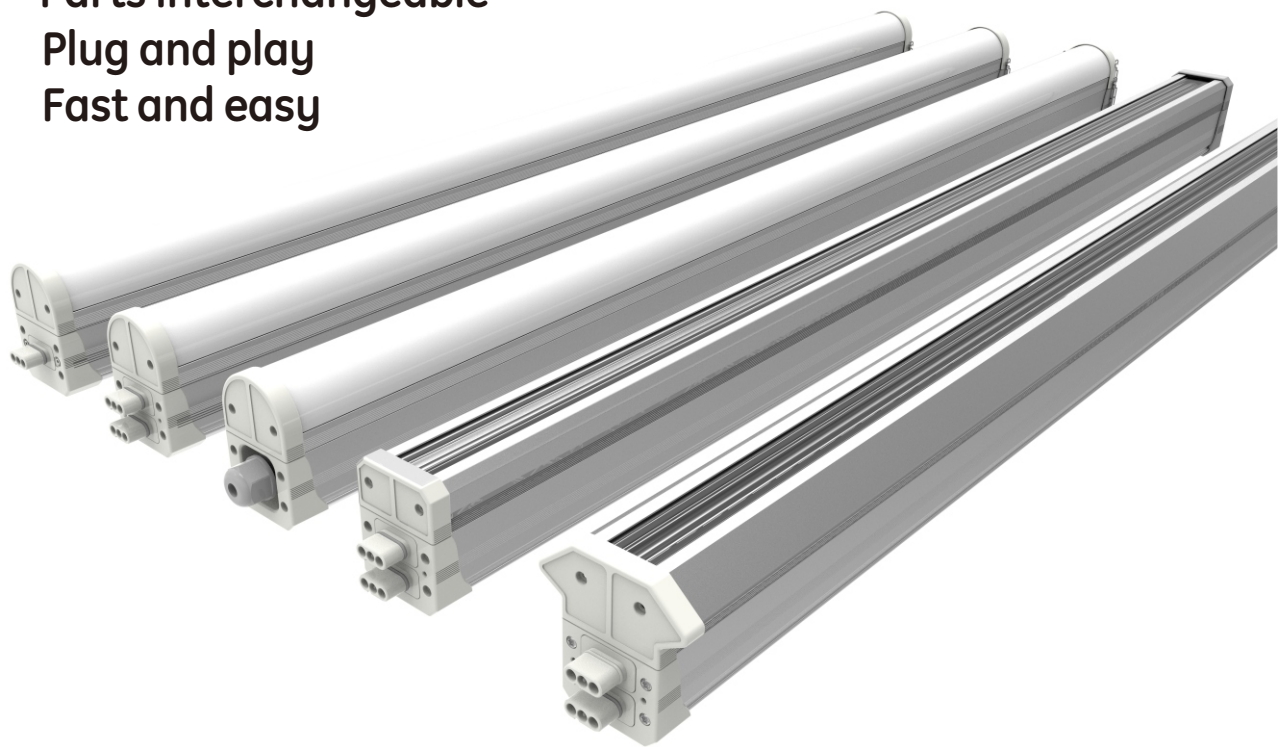


TriProof Flex I / Linear217 Modular LED Linear&Tri-proof light

Modular design
Parts interchangeable
Plug and play
Fast and easy

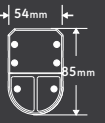


IP65
Linkable
0/1-10V

CE RoHS

**IP
65**

5 5 years
WARRANTY



Linear217-Modular LED Linear&Tri-proof light is the optimal solution for almost all linear lighting applications thanks to its flexibility, good quality, precise beam shaping and easy installation.

Linear217-Modular LED Linear&Tri-proof light adopts patented modular pre-assembled connector design (electrical and mechanical connections) and the system can hold up to 10*2.5mm wires for multi-functions.

Unique sealing material and technique ensures IP65 and makes the light workable even in harsh industrial surroundings.



**up to
160lm/W**



**easy and tool-free
installation**



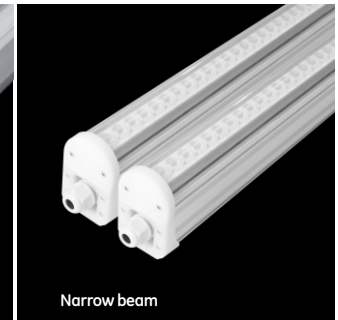
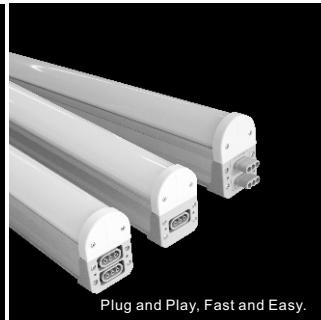
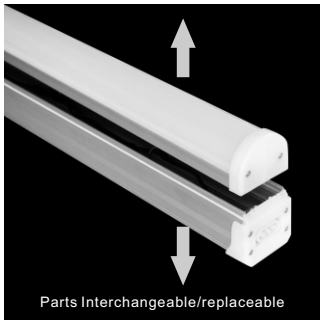
**intelligent
driver**



IP65

FEATURES

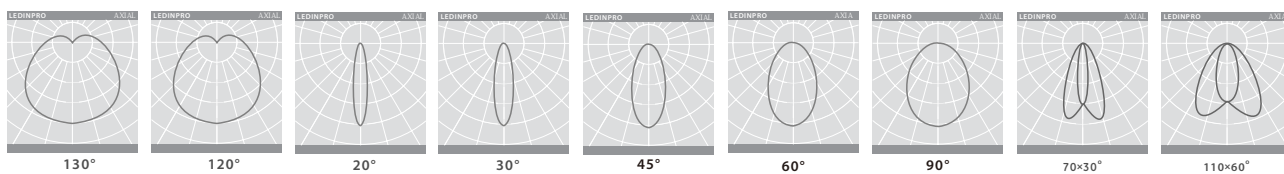
- IP65
- Modular design, parts interchangeable
- End-to-end connectable, quick installation
- Patented sliding clip design
- Various installations: suspending, ceiling mounting
- Can be integrated with Dimming (0-10V), emergency function, motion sensing
- 5 years warranty



Parameter

Type No.	Length (mm)	Wattage (W)	Beam Angle	Lumen(lm) Clear cover/Striped cover	LED	Input Voltage
217-0001	1500	30	120°/130°	4200/3900	2835	100-277VAC
217-0002	1500	45	120°/130°	6300/5850	2835	100-277VAC
217-0003	1500	65	120°/130°	9100/8450	2835	100-277VAC
217-0004	1500	30	120°/130°	4800/4500	2835	100-277VAC
217-0005	1500	45	120°/130°	7200/6750	2835	100-277VAC
217-0006	1500	65	120°/130°	10400/9750	2835	100-277VAC
217-0007	1500	65	70°×30°	8450	3030	100-277VAC
217-0008	1500	65	110°×60°	8450	3030	100-277VAC
217-0009	1500	65	20°/30°/45°/60°/90°	7800	3030	100-277VAC
217-0039	1200	130	40°/70°/90°	18200	2835	100-277VAC

Light Distribution



Various connections



- **3-core plug connector**
3*2.5mm²



- **6-core plug connector**
6*2.5mm²

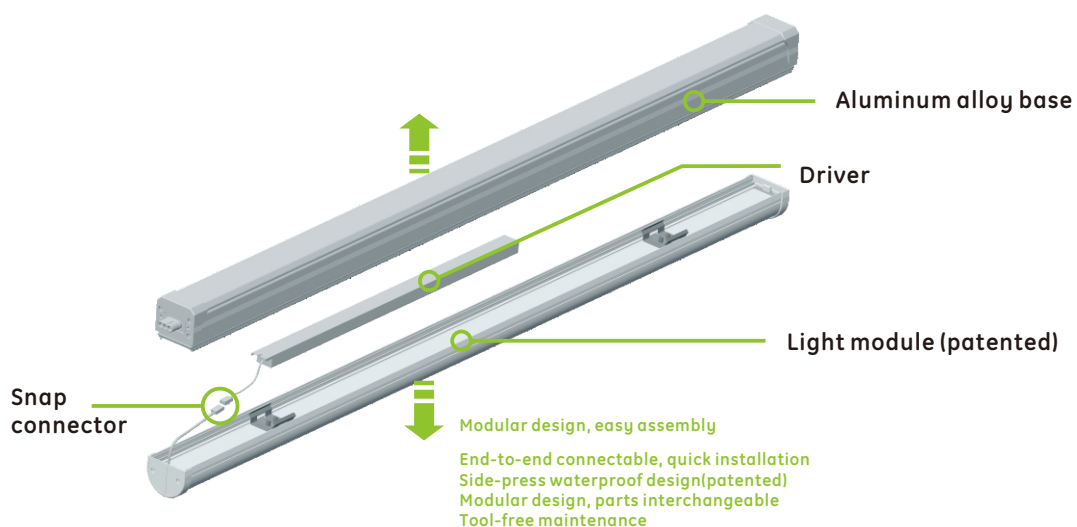


- **PG**
For up to 5*1.5mm²

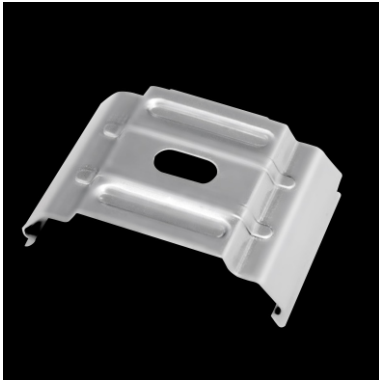


- **PG(plus)**
For up to 6*2.5mm²

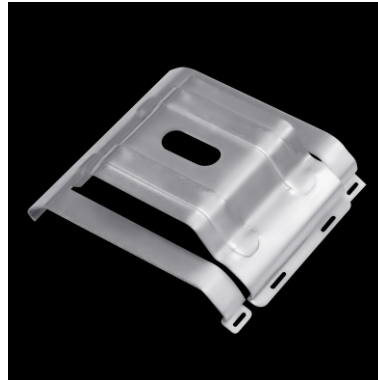
Product Overview



Ceiling mounting accessories



Stainless steel clips
217-A-0001



Sliding stainless steel clips
217-A-0002

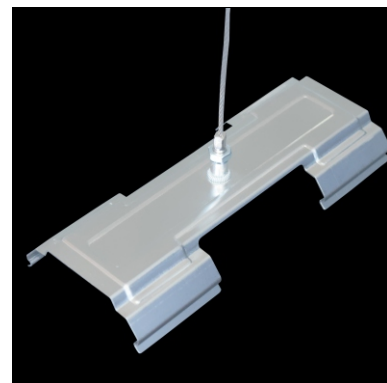


Interconnection clip
217-A-0005

Suspending accessories



Unadjustable Suspending kit
217-A-0003
Adjustable Suspending kit
217-A-0014



Adjustable suspending kit
for interconnection part
217-A-0015

Wiring accessories



Power cable
217-A-0006



Interconnection power cable
217-A-0007

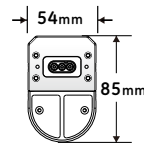
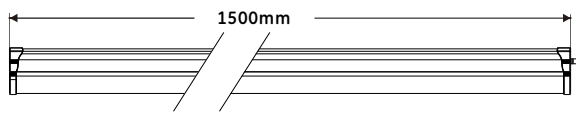


Inlet dimming cable
217-A-0017

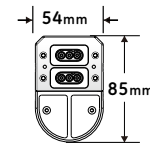


Dimming interconnection cable
217-A-0016

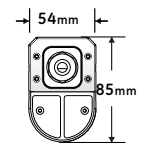
Dimension



3-core connector



6-core connector



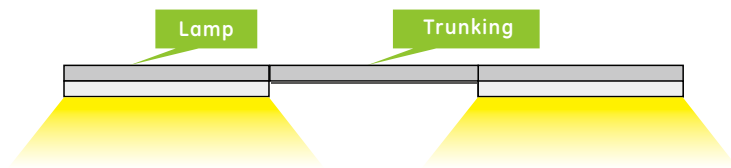
PG

Flexible technical solutions

Spot Light

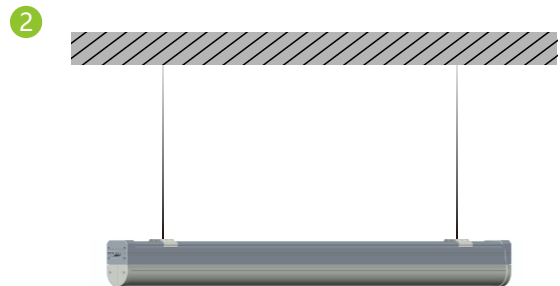
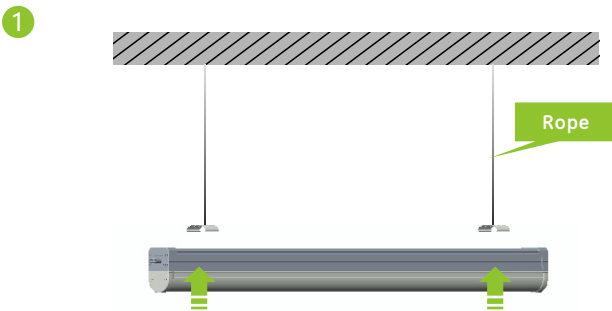


Trunking

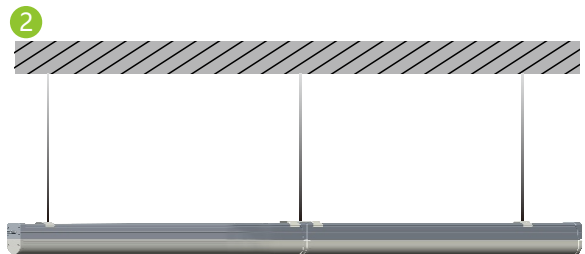
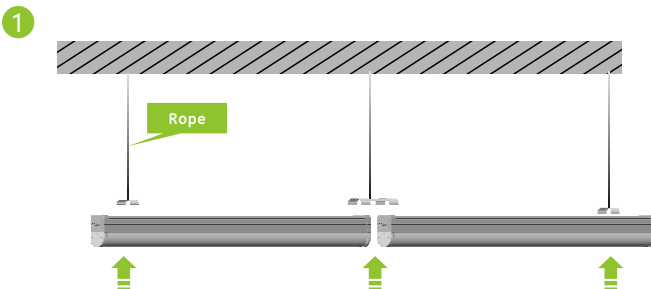


Installation

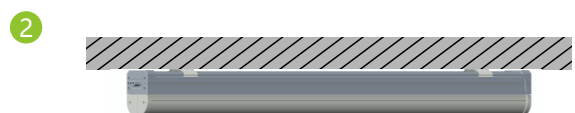
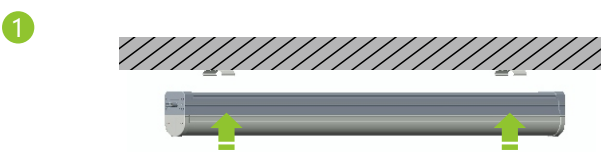
• Suspending



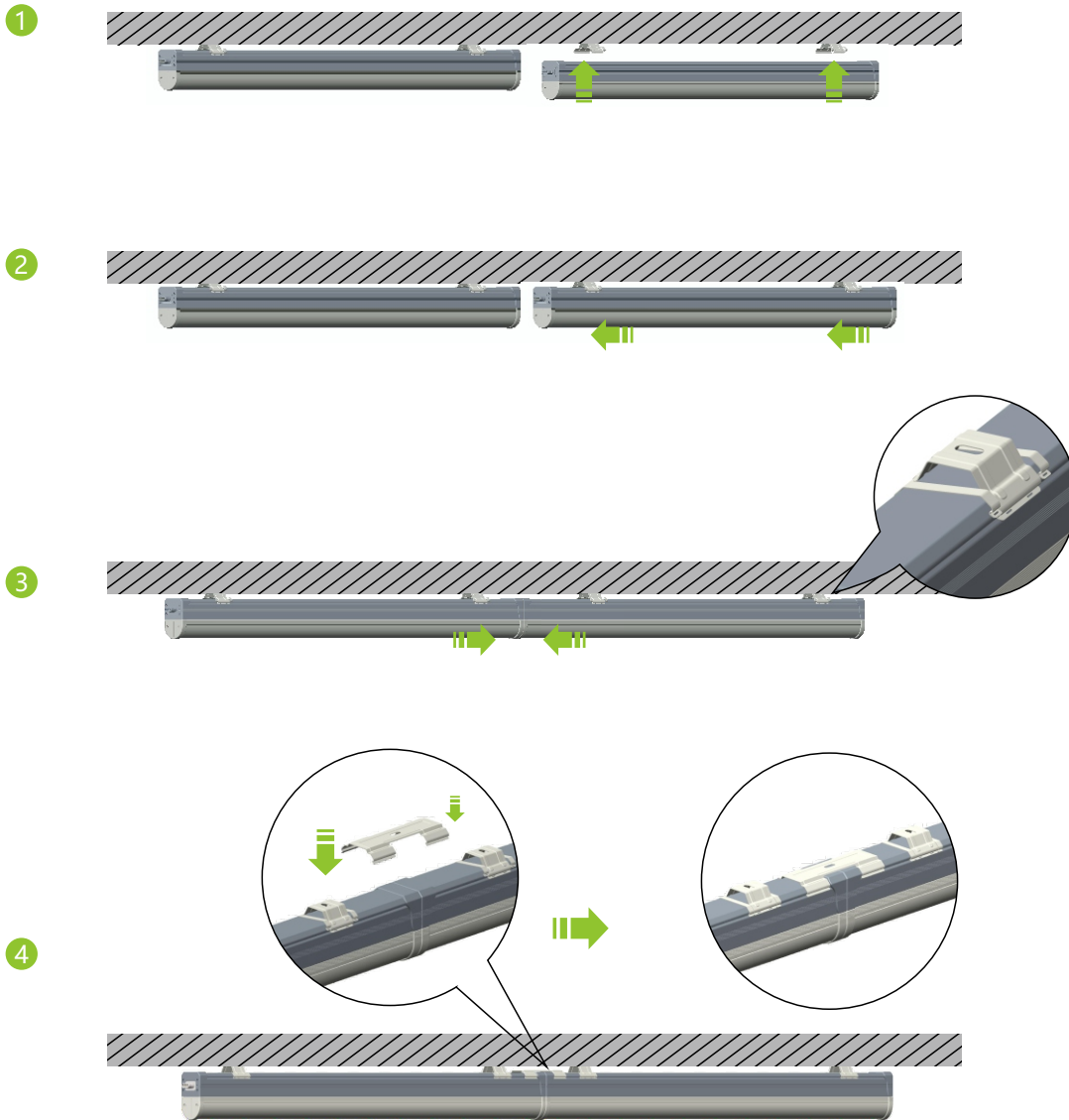
• Suspending (interconnection)



• Ceiling Mounting



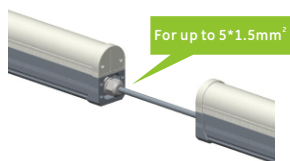
• Ceiling Mounting Interconnection -sliding clip (patented)



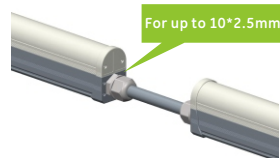
Interconnection



By plug connectors



By cable



By cable

Application



• Parking garage



• Supermarket



• Workshop



• Warehouse

Emergency Battery Backup

Lithium battery/Nickel-cadmium battery: 12V, 2800mA

Emergency Output	Discharge	Charging	Emergency Current
20W	90min	100-200mA	700mA
10W	180min	100-200mA	350mA

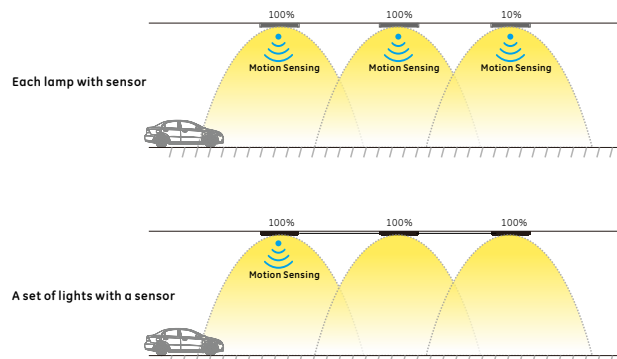


Motion Sensing

Reliable Detection Sensitivity



Sensing Angle	180°
Sensing Distance	3-10m
Delay Time Settings	0s, 5s, 10s, 15s, 20s, 30s, 60s, 120s
Dimming Settings	5%, 10%, 15%, 20%, 25%, 30%, 60%



About us

11 YEARS LED Experience

Zhengzhou Inledco Lighting Co., LTD, located in Zhengzhou city, Henan Province, China, is a leading LED lights manufacturer with professional R&D teams. We started researching and designing LED lights from 2006 and have been exporting 100% of our products to North America and Europe ever since.

We are committed to innovation and development of LED lights. Several series of innovative products have been developed and patented, some of which are even leading the trend in the market.