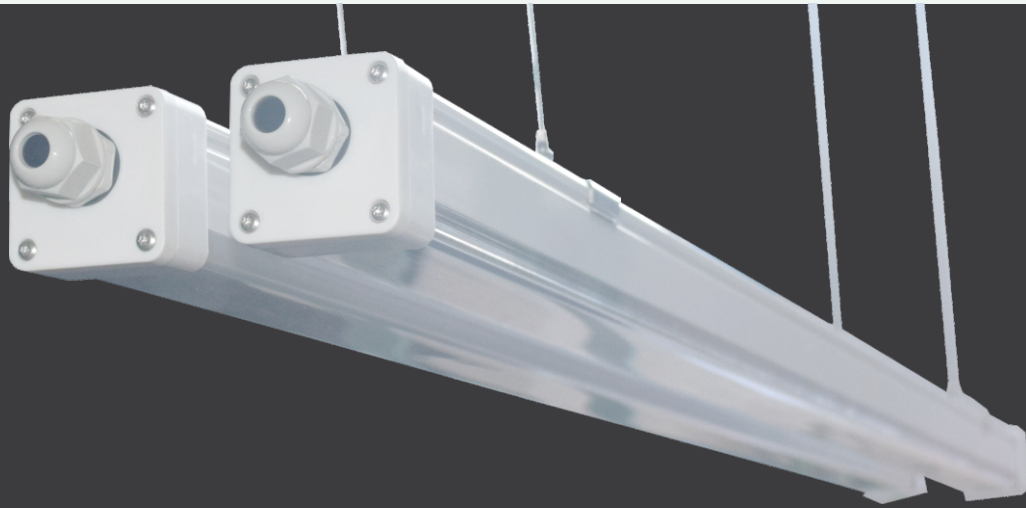


# TriProof Go /Linear240 Tri-proof LED Linear Light

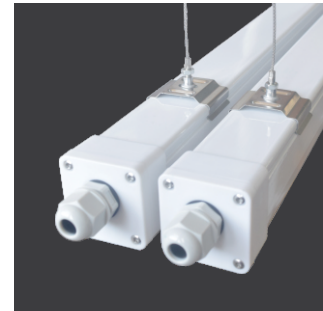


**CE** **RoHS**  **us**  
E-487567



## Introduction

TriProof Go/Linear 240 is waterproof luminaire for indoor applications and semioutdoor applications. Housing and cover of TriProof Go/Linear 240 are made of high quality poly-carbonate which has an excellent impact resistant property. Can be ceiling mounted or suspended.



## Features

- IP66
- IK08
- Full PC+Built-in aluminum alloy
- Can be integrated with Dimming (0-10V)
- High quality LED, Lifespan>50000hrs.
- 5 years warranty

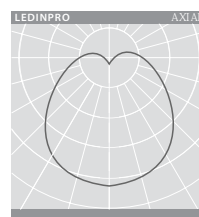


## Type and Function

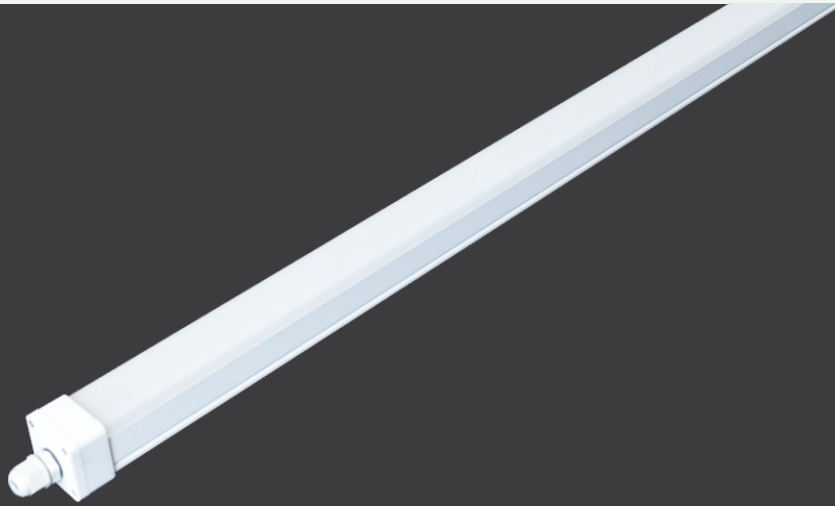
### Tri-Proof LED Linear Light (Frosted)



Can be used in Parking Garages, General industry, Dusty areas, Wet&moist areas



120°

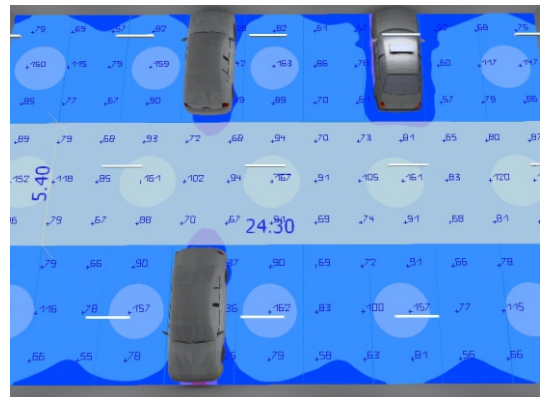


## Tri-proof LED Linear Light (Frosted)

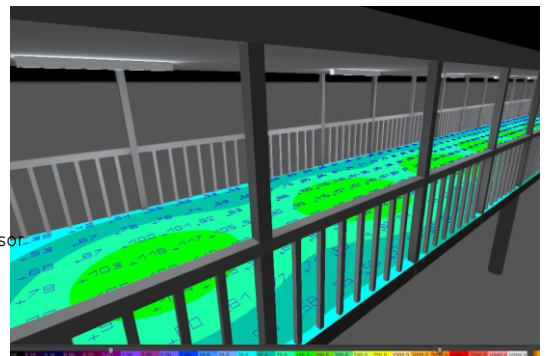
IP66, IK08, High impact-resistant,

LED CHARACTERISTICS					
LED 2835		CCT(K) 3000/4000/5000/6500		IK <b>08</b>	IP <b>66</b>
THD <15%	PF >0.9	Cover Frosted	Warranty 5 years		

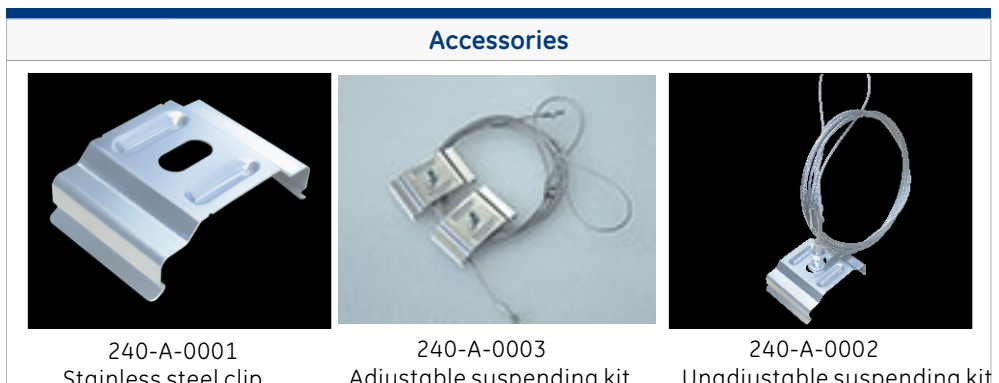
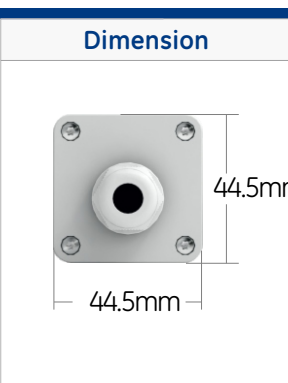
Parameter						
Type No.	LENGTH (mm)	INPUT VOLTAGE(V)	WATTAGE (WATTS)	LUMEN (LM)	Beam Angle	
240-0001	1200	100-277	20	2400	120°	
240-0016	1200	100-277	35	4200	120°	
240-0005	1200	100-277	45	5400	120°	
240-0020	1200	100-277	45	5400	120°	UL certified
240-0006	1500	100-277	30	3600	120°	UL certified with motion sensor
240-0007	1500	100-277	45	5400	120°	
240-0010	1500	100-277	60	7200	120°	



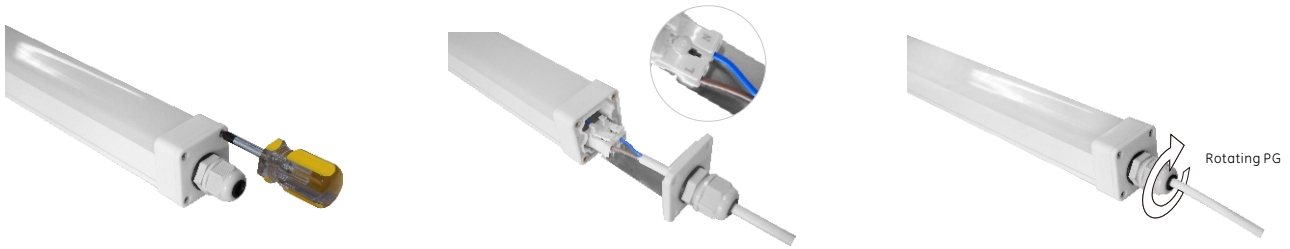
**Parking lot**  
1500mm / 30W



**Corridor**  
1200mm / 20W

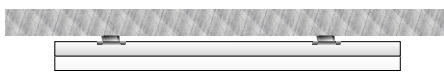


## Wiring



## Installation

Ceiling mounting



Suspending



## About us



Zhengzhou Inledco Lighting Co., LTD , located in Zhengzhou city, Henan Province, China, is a leading LED lights manufacturer with a professional R&D team. We started researching and developing LED lights since 2006. We are committed to innovation and development of LED lights. Several series of innovative products have been developed and patented, some of which are even leading the trend in the market .

**Zhengzhou is an important transportation interchange and has convenient air, railway and sea shipping.** Three block trains per week from Zhengzhou to Hamburg/ Duisburg (Malaszewicze). Station to station needs 12-16 days, which is about 25 days faster than sea transportation, the cost is 50% lower than the air transportation. Unloading is available along the route (Via Kazakhstan, Russia, Belarus and Poland). Distribution from Hamburg/ Warsaw to 36 cities in 14 European countries.