

# Trunk Go Flex/Linear249 Slim LED Trunking/Linear Light

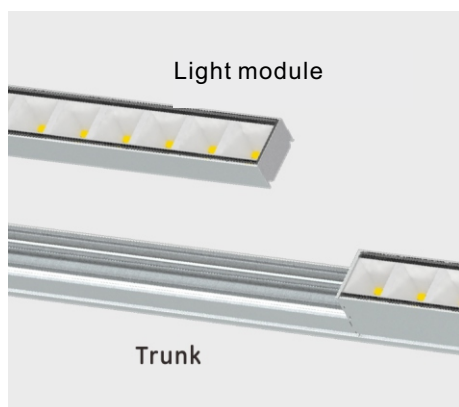


E-487566



## Features

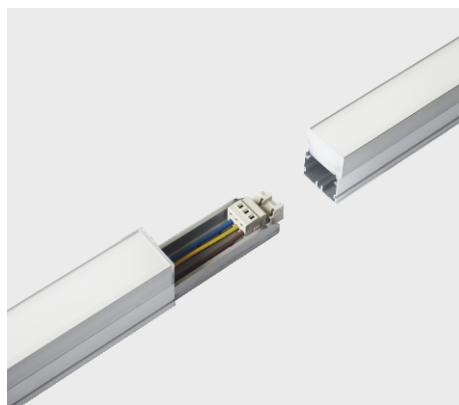
- High efficiency: up to 140lm/w
- UGR<19 (80°), Basic (110°)
- Flexible: linkable version/independent version
- Fast and easy
- 5 years warranty



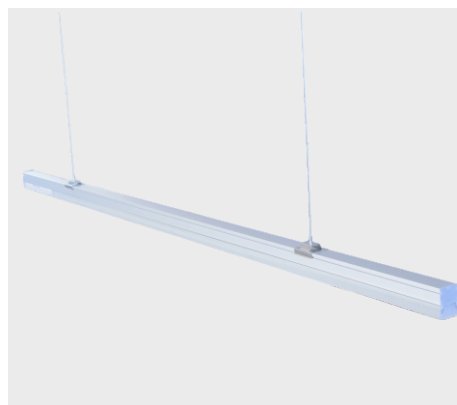
**Trunking**



**Anti-glare design  
UGR<19**



**Gapless linkable version**



**Independent version**

Blind module

# A VARIETY OF SOLUTIONS

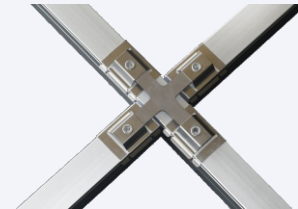
## Interconnection



"L" type

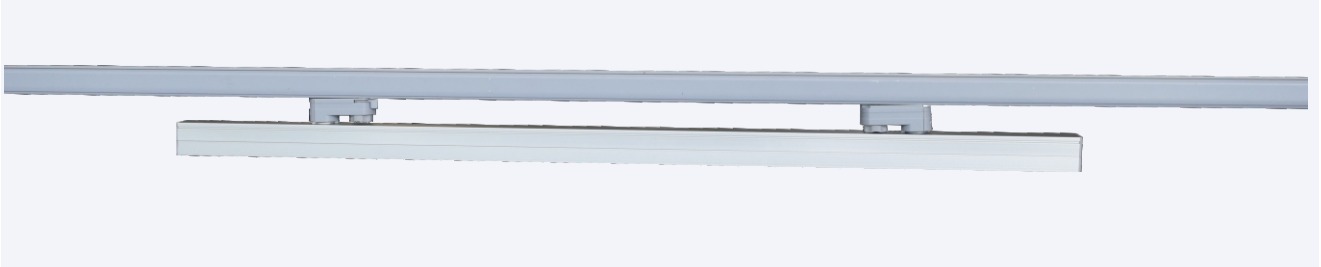


"T" type



"+" type

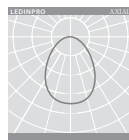
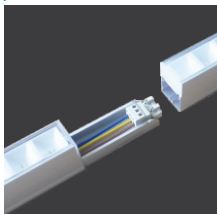
## Track Linear Light



### Type

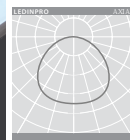
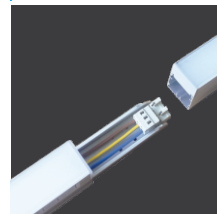
#### Linkable version

UGR<19



80°

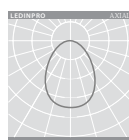
Basic-Frosted



110°

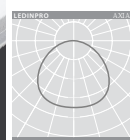
#### Independent version

UGR<19



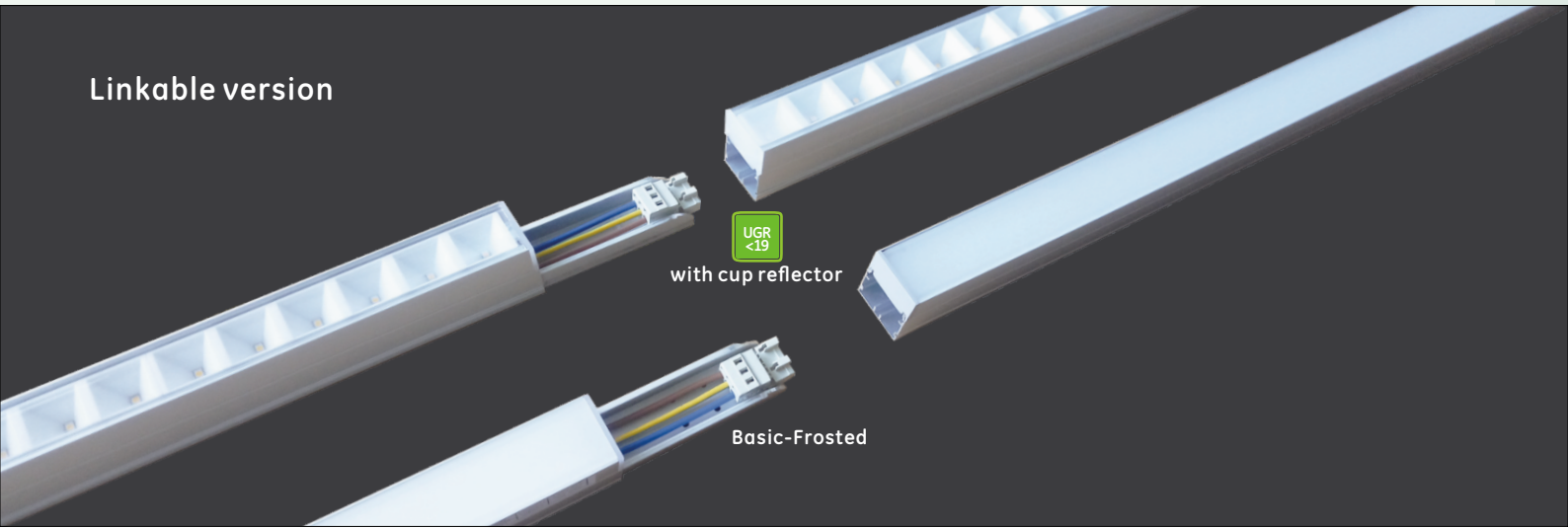
80°

Basic-Frosted



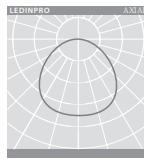
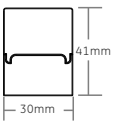
110°

## Linkable version



## Basic frosted

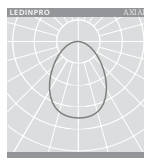
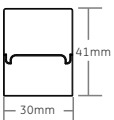
CHARACTERISTICS			
Input Voltage 100-277VAC		CCT(K) 3000/4000/5000/6500	
THD <15%	PF >0.9	Cover PC	Lifespan 60000Hrs



Parameter						
Type No. Linkable/Independent	Length (mm)	Wattage (W)	Lumen (lm)	LED	Beam Angle Frosted	
249-0026	1200	18	2340	Epistar2835	110°	
249-0001/0019	1200	25	3250	Epistar2835	110°	
249-0002/0020	1200	50	6500	Epistar2835	110°	
249-0003/0021	1500	30	3900	Epistar2835	110°	
249-0004/0022	1500	60	7800	Epistar2835	110°	

## UGR<19

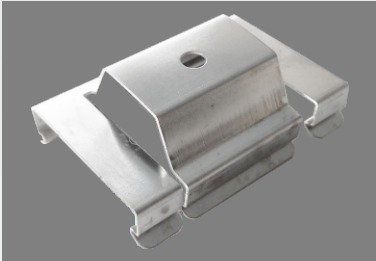
CHARACTERISTICS			
Input Voltage 100-277VAC		CCT(K) 3000/4000/5000/6500	
THD <15%	PF >0.9	Cover PC	Lifespan 80000Hrs



Parameter						
Type No.	Length (mm)	Wattage (W)	Lumen (lm)	LED	Beam Angle Frosted	
249-0005/0023	1200	20	2400	Samsung3030	80°	
249-0006/0024	1500	25	3000	Samsung3030	80°	

Wire Diameter	1.5mm <sup>2</sup>
Voltage	220V
Power	
QTY	
20W	95pcs
25W	76pcs
30W	63pcs
50W	38pcs
60W	31pcs

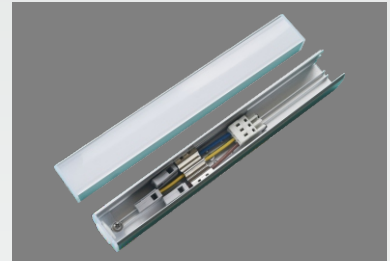
## Accessories



249-A-0002  
Ceiling mounting clips  
for linkable version



249-A-0016  
Adjustable suspending kits  
for linkable version(1.5m)  
249-A-0003  
Unadjustable suspending kits  
for linkable version(1.5m)



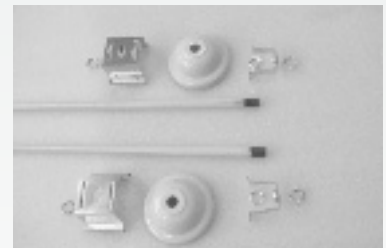
249-A-0008  
Power entry module (for 1st light)



249-A-0009  
End plate (for the last light)

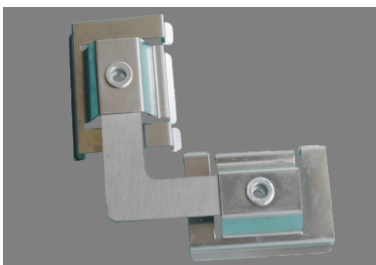


249-A-0010  
Gapless ceiling mounting clips



249-A-0004  
Suspending pole for  
linkable version (1m)

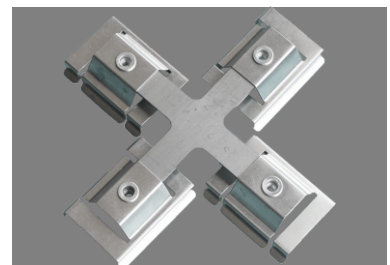
## Interconnection accessories



249-A-0005  
"L" type interconnection (1set)



249-A-0006  
"T" type interconnection (1set)



249-A-0007  
"+" type interconnection (1set)

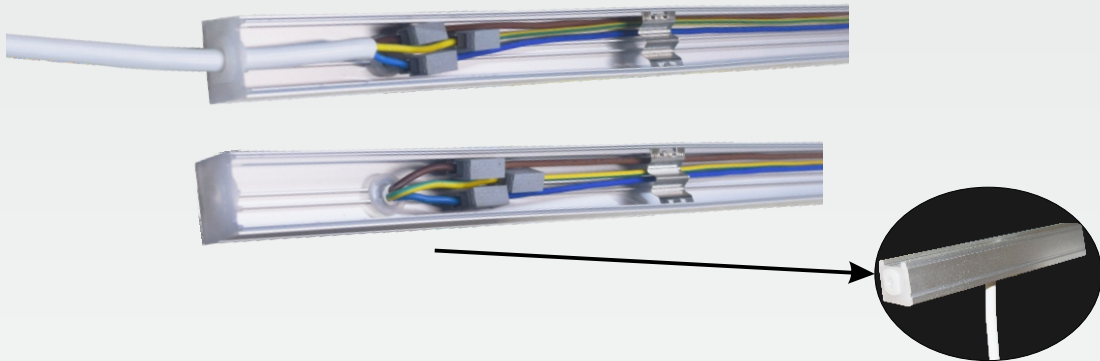
## Installation

### Power entry

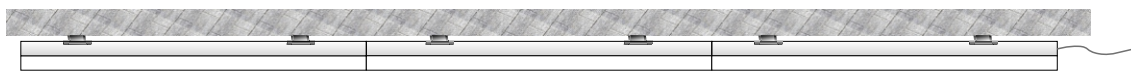
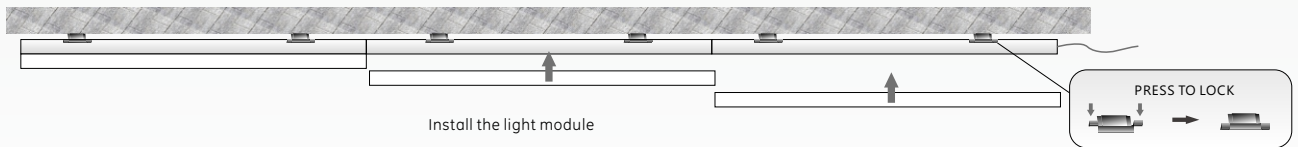
1. With power entry module



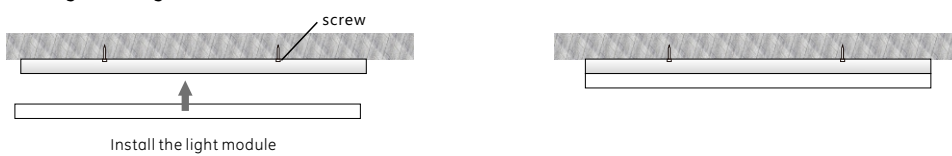
2. Entry from end or back



### Ceiling mounting (clips)

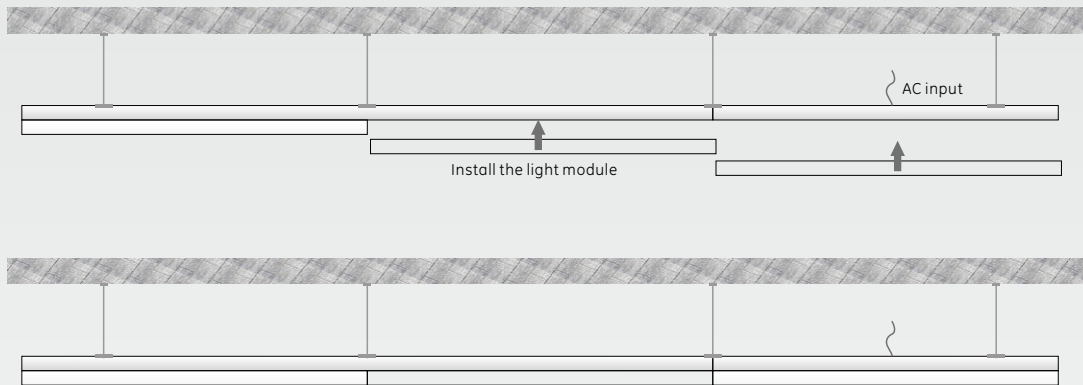


### Ceiling mounting (screw)

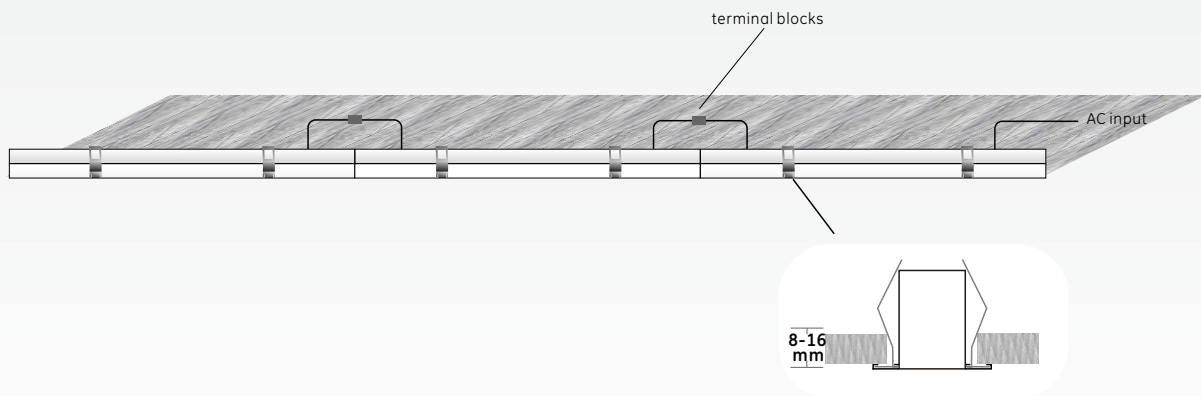


## Installation

### Suspending



### Recessed



## About us

### 11 YEARS LED Experience

Zhengzhou Inledco Lighting Co., LTD , located in Zhengzhou city, Henan Province, China, is a leading LED lights manufacturer with professional R&D teams. We started researching and designing LED lights from 2006 and have been exporting 100% of our products to North America and Europe ever since. We are committed to innovation and development of LED lights. Several series of innovative products have been developed and patented, some of which are even leading the trend in the market .