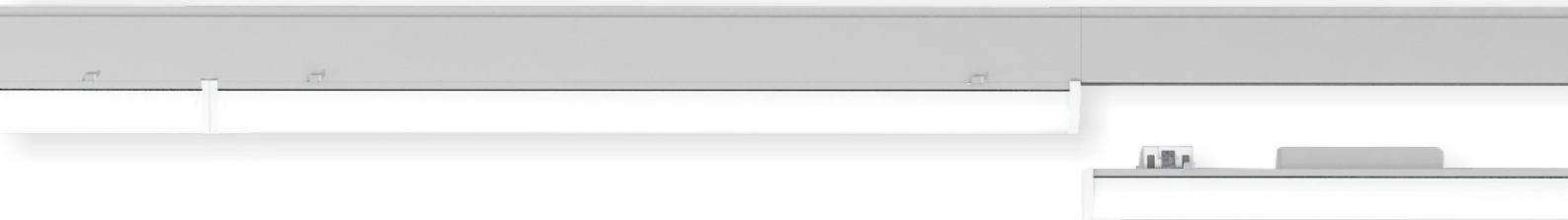


Trunk Pro Flex/Linear232 LED Linear Trunking System



160
lm/W

UGR
<19

0-10V

 5 years
WARRANTY

CE RoHS

Trunking

built-in click

Blind module

Track Light Rail

Light module

Track light



Why LL232?



**up to
160lm/W**



**easy and tool-free
installation**



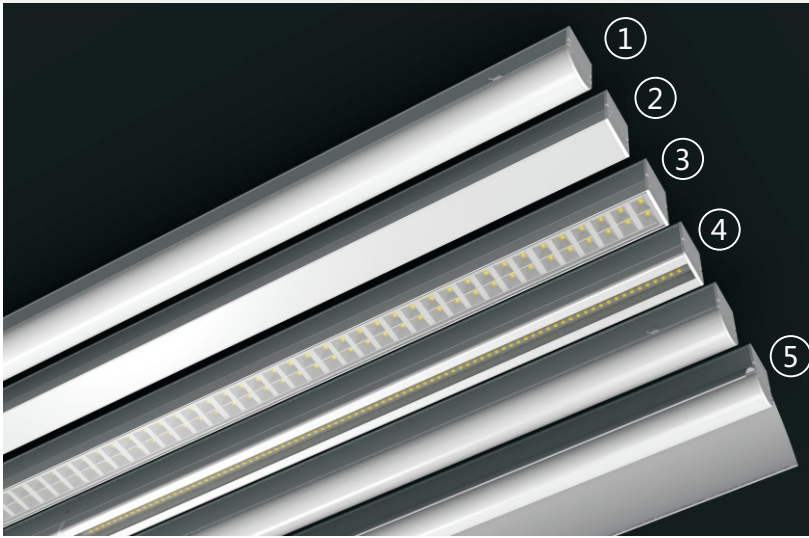
**intelligent
driver**



**basic/batwing/lens
UGR<19/reflector**

- Modular design, parts replaceable
- No flickering
- Various beam angles: Wide, Narrow, Batwing,
- UGR<19 (optional)

- Options: Dimming (0-10V), Motion Sensing, Backup Battery
- Installation height from 2.5m till 12m
- 5 years warranty



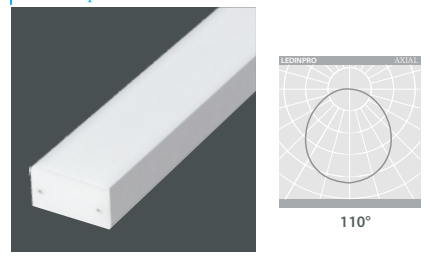
- ①/② Basic:
Half round/Square
- ③ Linear office
UGR < 19
- ④ Linear lens:
High efficiency, uniform lighting (45°, 60° and 90°)
- ⑤ Reflector:
Low glare, soft lighting (45°, 75° and 90°)

Light module and trunking

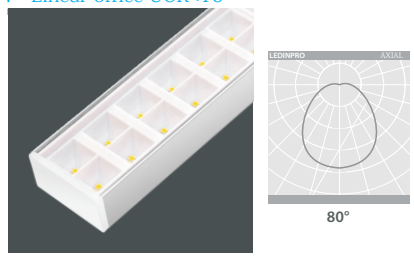
Basic: Half round



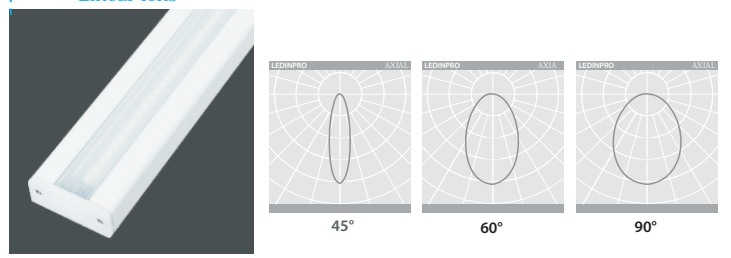
Basic: Square



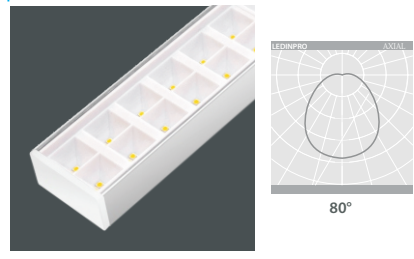
Linear office UGR < 19



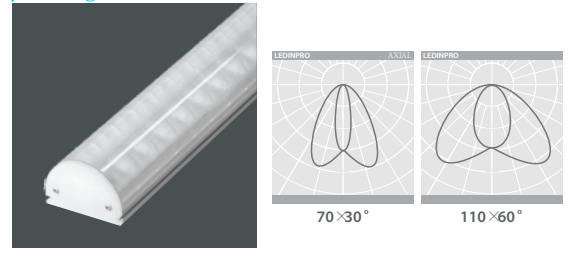
Linear lens



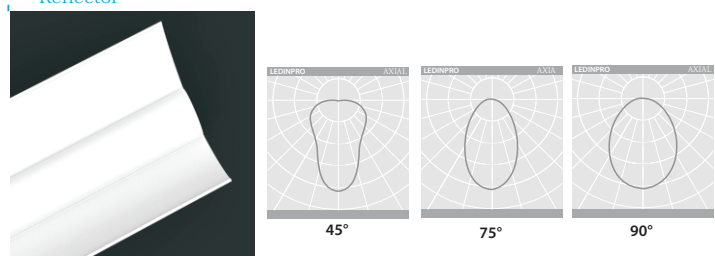
Linear office UGR < 22

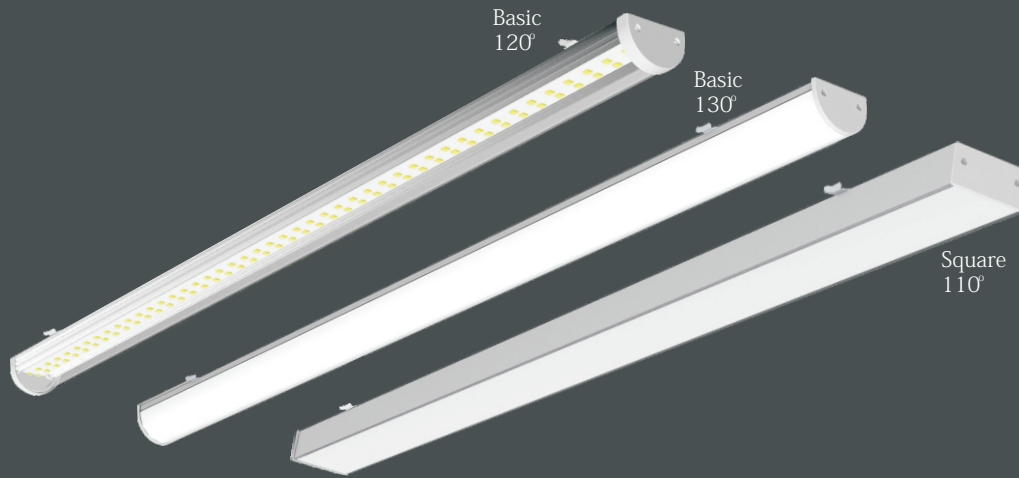


Batwing



Reflector





Basic

| CHARACTERISTICS | | | |
|-----------------------------|------------|-------------------------------|----------------------|
| Input Voltage 100-277VAC | | CCT(K) 3000/4000/5000/6500 | |
| THD <15% | PF >0.9 | Cover PC | Lifespan 60000Hrs |

| Dimension | |
|-----------|--|
| | |

| Parameter | | | | | | | |
|------------------------|-------------|-------------|-------------------------|--------------------|-----------------------|------------------|--|
| High Efficiency | | | | | | | |
| Type No. | Length (mm) | Wattage (W) | Lumen Frosted (150lm/W) | Beam Angle Frosted | Lumen Clear (160lm/W) | Beam Angle Clear | |
| 232-0022 | 1500 | 45 | 6750 | 130° | 7200 | 120° | |
| 232-0023 | 1500 | 65 | 9750 | 130° | 10400 | 120° | |
| Standrad | | | | | | | |
| Type No. | Length (mm) | Wattage (W) | Lumen Frosted (140lm/W) | Beam Angle Frosted | Lumen Clear (150lm/W) | Beam Angle Clear | |
| 232-0038 | 1500 | 45 | 6300 | 130° | 6750 | 120° | |
| 232-0039 | 1500 | 65 | 9100 | 130° | 9750 | 120° | |

Low bay-Square

| CHARACTERISTICS | | | |
|-----------------------------|------------|-------------------------------|-----------------------|
| Input Voltage 100-277VAC | | CCT(K) 3000/4000/5000/6500 | |
| THD <15% | PF >0.9 | Cover PC | Lifespan 100000Hrs |

| Dimension | |
|-----------|--|
| | |

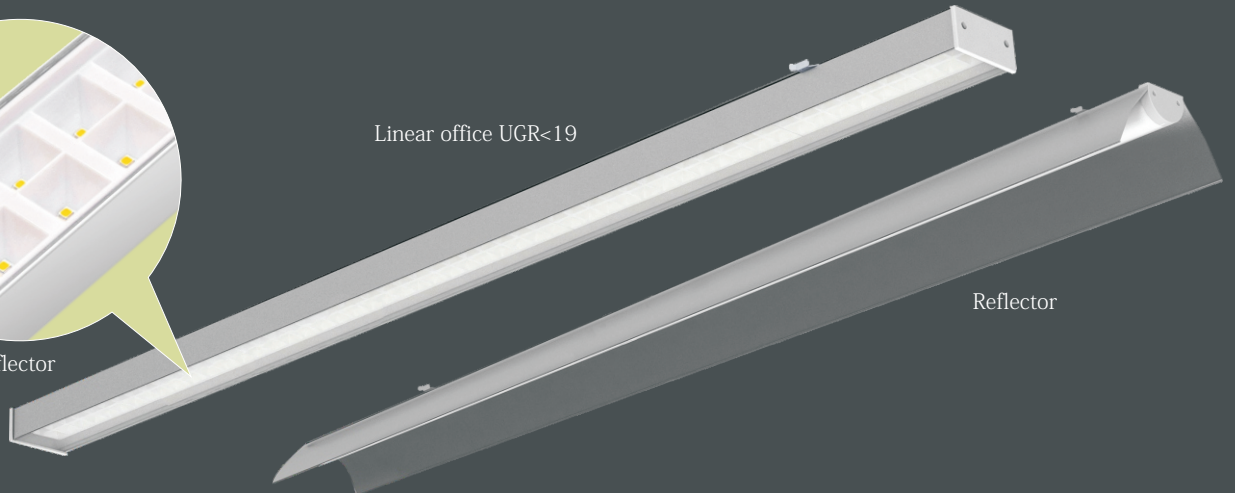
| Parameter | | | | |
|-----------|-------------|-------------|------------|--------------------|
| Type No. | Length (mm) | Wattage (W) | Lumen (lm) | Beam Angle Frosted |
| 232-0026 | 1500 | 45 | 5400 | 110° |
| 232-0027 | 1500 | 65 | 7800 | 110° |

Remark: There will be about 5% lumen deviation on different CCT.



with cup reflector

Linear office UGR<19

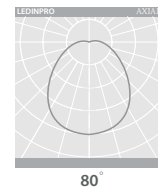
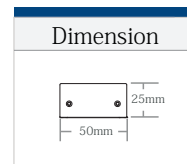


Reflector

Linear office UGR<19

| CHARACTERISTICS | | | |
|-----------------------------|------------|-------------------------------|----------------------|
| Input Voltage 100-277VAC | | CCT(K) 3000/4000/5000/6500 | |
| THD <15% | PF >0.9 | Cover PC | Lifespan 80000Hrs |

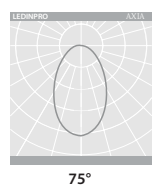
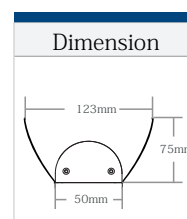
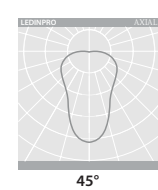
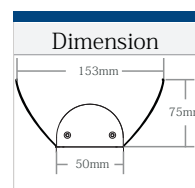
| Parameter | | | | | | |
|-----------|-------------|-------------|------------|------------|--------|--|
| Type No. | Length (mm) | Wattage (W) | Lumen (lm) | Beam Angle | UGR | |
| 232-0030 | 1500 | 45 | 5400 | 80° | UGR<19 | |
| 232-0046 | 1500 | 65 | 7150 | 80° | UGR<22 | |



Reflector

| CHARACTERISTICS | | | |
|-----------------------------|------------|-------------------------------|----------------------|
| Input Voltage 100-277VAC | | CCT(K) 3000/4000/5000/6500 | |
| THD <15% | PF >0.9 | Cover PC | Lifespan 60000Hrs |

| Parameter | | | | | |
|------------|-------------|-------------|------------|---------------|--|
| Type No. | Length (mm) | Wattage (W) | Lumen (lm) | Beam Angle | |
| 232-0042 | 1500 | 45 | 6300 | 45°/75°/90° | |
| 232-0033 | 1500 | 65 | 9100 | 45°/75°/90° | |
| 232-0040 | 1500 | 120 | 16800 | 45°/75°/90° | |
| 232-A-0028 | 1500 | | | 45° reflector | |
| 232-A-0053 | 1500 | | | 75° reflector | |
| 232-A-0054 | 1500 | | | 90° reflector | |



reflector

Remark: There will be about 5% lumen deviation on different CCT.

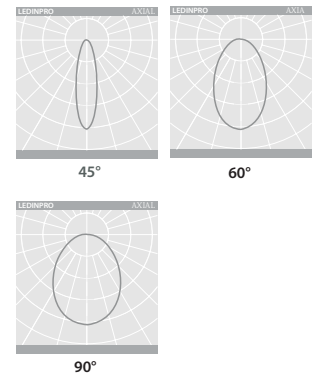


Linear Lens
45° 60° 90 °

Batwing
70×80°; 110×60°

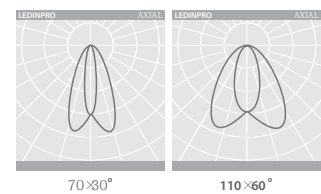
Linear Lens

| CHARACTERISTICS | | | | Dimension | |
|-----------------------------|-------------|-------------------------------|----------------------|--------------|--|
| Input Voltage 100-277VAC | | CCT(K) 3000/4000/5000/6500 | | | |
| THD <15% | PF >0.9 | Cover PMMA | Lifespan 60000Hrs | | |
| Parameter | | | | | |
| Type No. | Length (mm) | Wattage (W) | Lumen (lm) | Beam Angle | |
| 232-0036 | 1500 | 45 | 6750 | 45°/60°/90 ° | |
| 232-0037 | 1500 | 65 | 9750 | 45°/60°/90 ° | |
| 232-0040 | 1500 | 120 | 18000 | 45°/60°/90 ° | |



Batwing

| CHARACTERISTICS | | | | Dimension | |
|-----------------------------|-------------|-------------------------------|----------------------|------------|--|
| Input Voltage 100-277VAC | | CCT(K) 3000/4000/5000/6500 | | | |
| THD <15% | PF >0.9 | Cover PC | Lifespan 80000Hrs | | |
| Parameter | | | | | |
| Type No. | Length (mm) | Wattage (W) | Lumen (lm) | Beam Angle | |
| 232-0024 | 1500 | 65 | 8450 | 70×80° | |
| 232-0025 | 1500 | 65 | 8450 | 110×60° | |



Single Asymmetric

| CHARACTERISTICS | | | | Dimension | |
|-----------------------------|-------------|-------------------------------|----------------------|------------|--|
| Input Voltage 100-277VAC | | CCT(K) 3000/4000/5000/6500 | | | |
| THD <15% | PF >0.9 | Cover PC | Lifespan 80000Hrs | | |
| Parameter | | | | | |
| Type No. | Length (mm) | Wattage (W) | Lumen (lm) | Beam Angle | |
| 232-0041 | 1500 | 45 | 5400 | 30/45/60° | |

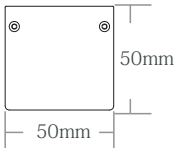
Remark: There will be about 5% lumen deviation on different CCT.



Trunking

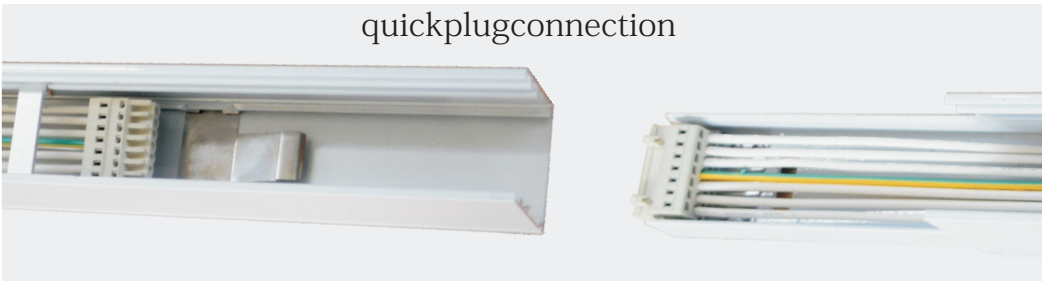


L1, L2, L3, N, PE0-10V

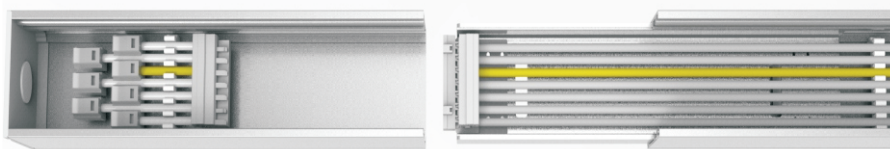


3/5/7 core cabling available ,Length Spec:1500mm

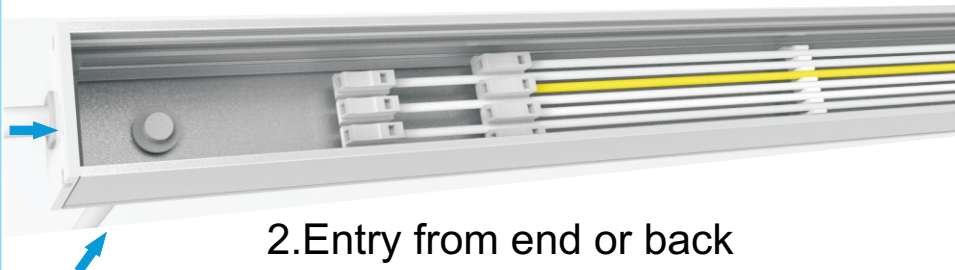
quickplugconnection



Power entry



1. With entry module



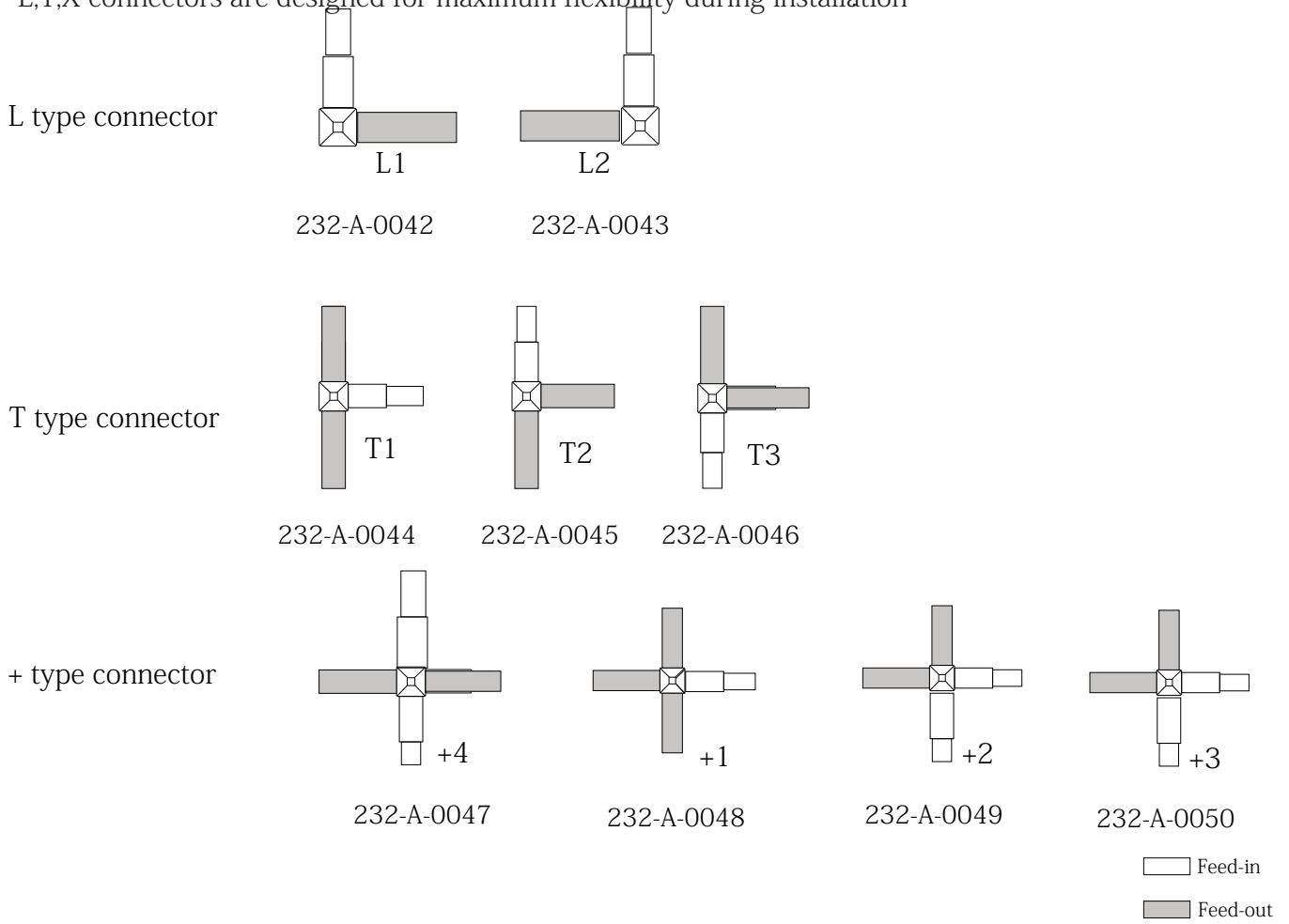
2. Entry from end or back

Parameter

| | Type No. | LENGTH (mm) | wires |
|----------|------------|-------------|----------------------|
| Trunking | 232-A-0020 | 1500 | 3×2.5mm ² |
| | 232-A-0037 | 1500 | 5×2.5mm ² |
| | 232-A-0022 | 1500 | 7×2.5mm ² |

CONNECTOR

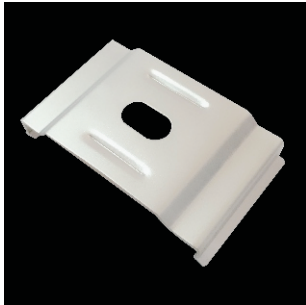
L,T,X connectors are designed for maximum flexibility during installation



Maximum interconnection QTY

| | |
|---------------|--------------------|
| Wire Diameter | 2.5mm ² |
| Voltage | 220V |
| Power | QTY |
| 45W | 71pcs |
| 65W | 49pcs |
| 120W | 26pcs |

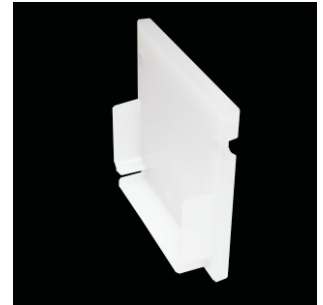
Accessories



232-A-0055
Stainless steel clips
for ceiling mounting



232-A-0025 Adjustable Suspending kits(1pair, 2.5m)
232-A-0059 Adjustable Suspending kits(1pair, 1.5m)
232-A-0062 Unadjustable Suspending kits(1pair, 1.5m)

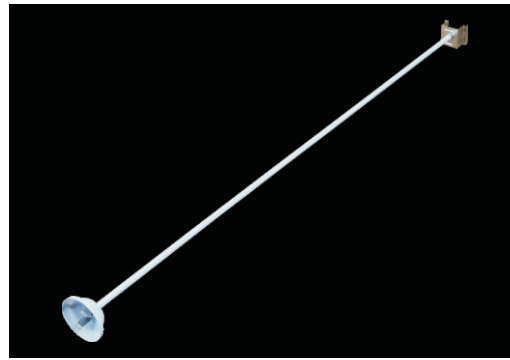


End plate for the last light



232-A-0026

power entry module for the first light

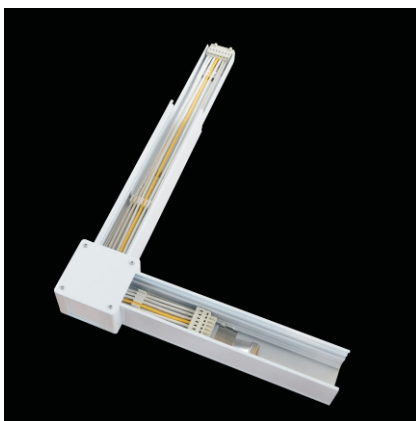


232-A-0036

Suspending pole (1m)



Connector



"L" type



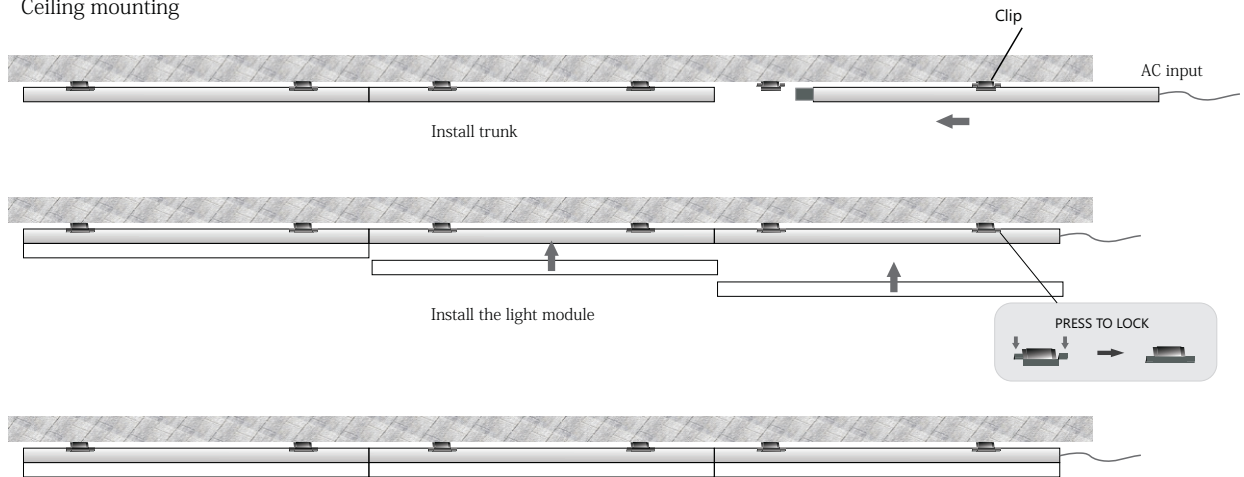
"I" type



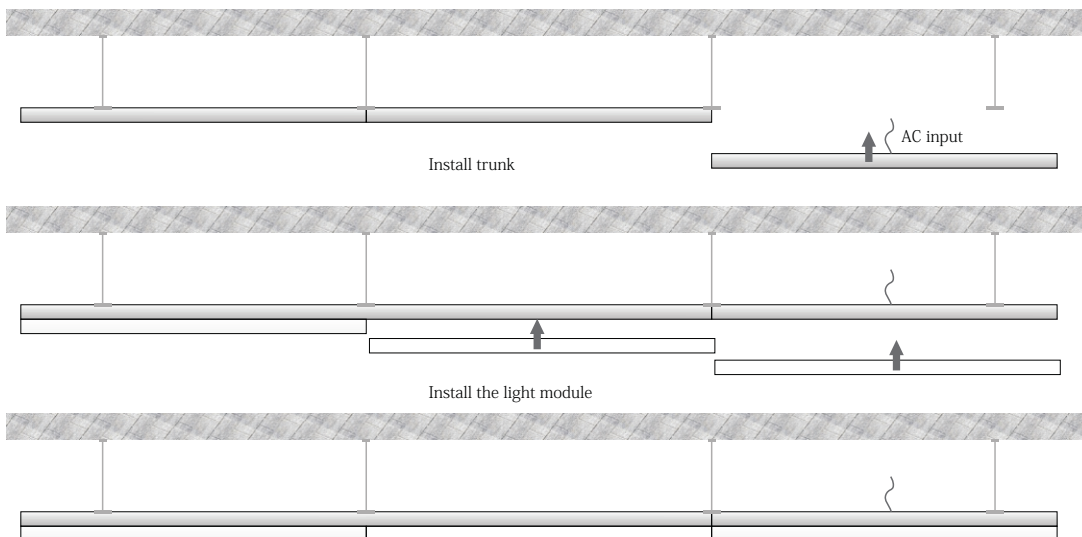
"X" type

Installation

Ceiling mounting



Suspending



Recommended distance between suspending points is 1250mm for 1500mm
Recommended distance between suspending points is 2100mm for 3000mm